



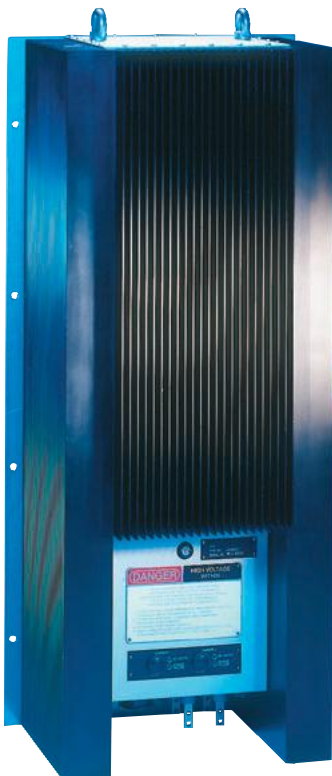
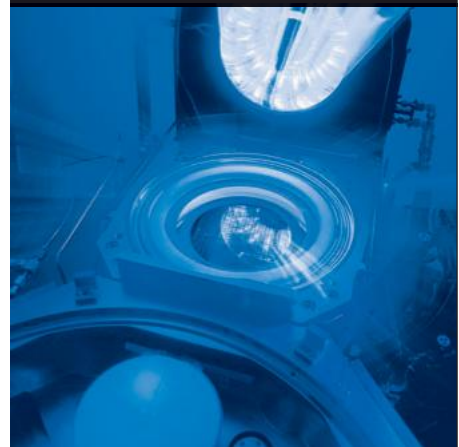
**500 W power supply in paperback size**

- for mobile telecommunication networks
- UMTS / GSM / DCS applications
- compact and robust design
- thermal discharge through heat pipes



**40 kW liquid cooled power supply**

- for semiconductor manufacturing industry
- highly demanding environment
- extreme load variations
- transfer of thermal energy into a fluid for heat exchange re-capture



**24 kW switch mode battery charger**

- with high power density for installation on board a train
- designed for high level of shock and vibration
- totally sealed for protection against dust and dirt IP66
- operational under environmental temperatures of -40°C to +80°C





**400 kW Aircraft Starter System**

- 290 VDC Power Supply System
- Dual 700 A configuration
- For a highly inductive turbine load



**200 kW DC Power Network**

- 110 VDC Power Supply System
- Dual 800 A configuration
- Fully operational up to +55 °C
- IP42

### Multi input / output converter



- ┆ for supply of mobile measurement systems during summer and winter test drives
- ┆ intelligent energy management with battery back up and load simulation
- ┆ various inputs for DC and AC supply
- ┆ various DC outputs and one optional AC output
- ┆ CAN bus interface



### 4 kW converter for mains simulation



- ┆ for testing of equipment on the latest generation fighter aircraft
- ┆ output selection, 3-phase AC or 3 individual DC voltages
- ┆ each output is individually programmable via RS232 interface



### Dual redundant, fault tolerant, power supply system



- ┆ for installation in explosive environments (hazardous area 1)
- ┆ assisting the industry in the search for mineral resources
- ┆ allowing the failure of a single power supply, not affecting the controlled output
- ┆ the overall power supply unit is housed within a certified Exd enclosure
- ┆ an Exe enclosure being attached to the Exd enclosure contains all terminations, operator indications and switches

