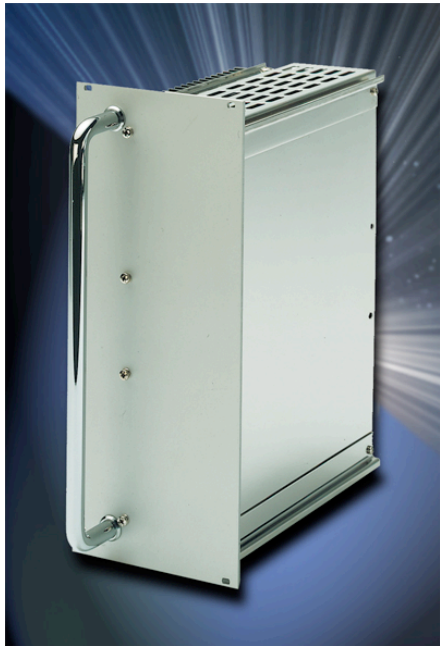


## Rugged Power Converter from Schaefer Accepts High Input Voltage Range

### Reliable Power Conversion for Remote Locations

#### FOR IMMEDIATE RELEASE



**January 6, 2010 - Ashland, MA -** Schaefer, Inc., a manufacturer of robust and reliable power supplies, announces the C4500HV Series of high input voltage power converters.

The C4500HV Series can accept high input voltages of up to 3000VDC. The converter provides high output voltages and is ideal for applications that require reliable power for remote locations.

The Series' robust design, using industrial grade components, yields a highly efficient, space-saving 6U solution for even the most extreme environments.

The C4500HV Series is based upon Schaefer's C/B4500 Series, which offers an extensive lineup of over 150 standard models. Standard DC input voltage options span a range from 10VDC to 800VDC. AC input

models offer either 1-Phase or 3-Phase options as well as battery charging models. Single output voltages encompass a range from 9VDC to 400VDC, all of which are adjustable and fully regulated to 0.2% or better (load) and 0.1% (line).

Remote sense capability and comprehensive protection circuitry is inherent in the design, with efficiencies up to 90%. Operating temperature is -20C to +75C, with -40C to +75C as an option. Additional options include parallel / redundant operation, further mechanical ruggedization, inhibit, Power-OK / DC-OK alarms, and system reset.

Custom or modified mechanical and electrical designs are welcomed.

For further information and product price/delivery, please contact [sales@schaeferpowers.com](mailto:sales@schaeferpowers.com), (508)881-7330, <http://www.schaeferpowers.com>.

**Editorial Contact:**

**Susan Cervenak - Schaefer, Inc. - [scervenak@schaeferpowers.com](mailto:scervenak@schaeferpowers.com)**