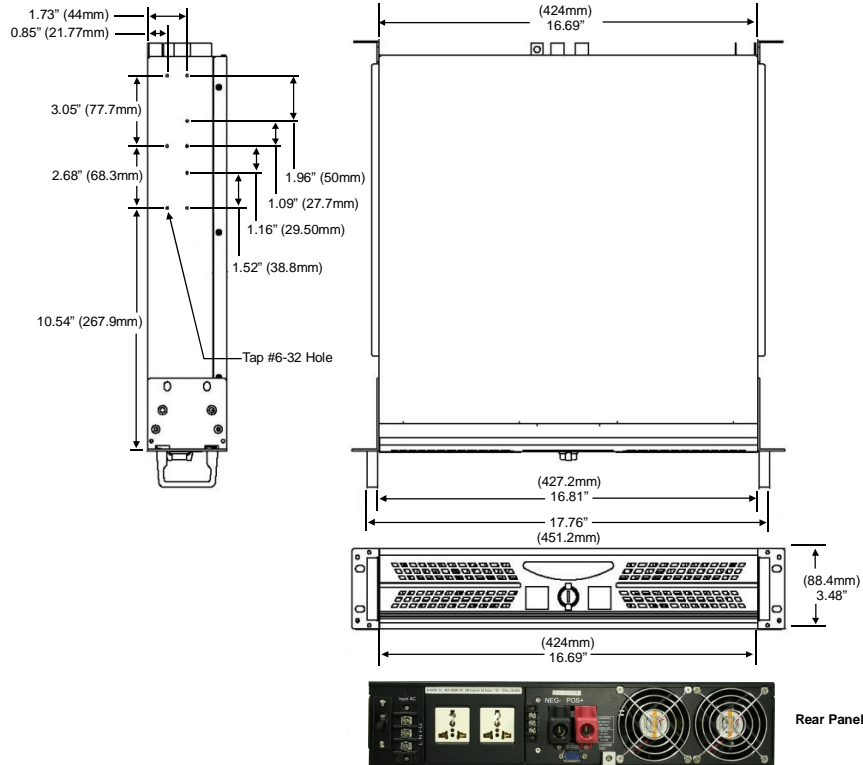
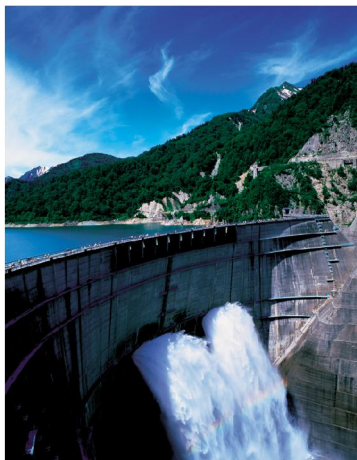


2KVA Rackmount Pure Sine Wave Inverter

Inverter Model	AEP-U2000R-1101	AEP-U2000R-2201	AEP-U2000R-XX1	AEP-U2000R-1102	AEP-U2000R-2202	AEP-U2000R-XX2
Continuous Output	1700W(2KVA)	1700W (2KVA)	1500W - 1700W	1700W (2KVA)	1700W (2KVA)	1500W - 1700W
Output Surge (20 Sec.)	2040W	2040W	Ref AEP-2000R specs	2040W	2040W	Ref AEP-2000R specs
Output Surge (1 Min.)	1870W	1870W		1870W	1870W	
AC Output Voltage	100 / 110 / 115 / 120V			200 / 220 / 230 / 240V		
Output Voltage Regulation	-3% / +3%					
Output Frequency	50Hz / 60Hz ± 0.05%					
Peak Output Current	25A	11A	25A	25A	11A	11A
Output Waveform	Pure Sine Wave <3% THD					
Efficiency	90%	91%	86% - 92%	92%	93%	86% - 92%
No Load Current Draw						
AC Output Receptacle	Universal Socket x 2 (Other sockets optional)					
Input Voltage	110VDC	220VDC	12, 24, or 48VDC	110VDC	220VDC	12, 24, or 48VDC
Input Voltage Range	90 ~ 140VDC	180 ~ 275VDC	Ref AEP-2000R specs	90 ~ 140VDC	180 ~ 275VDC	Ref AEP-2000R specs
Protection	Under/Over Input Voltage, Over Temperature, Reverse Polarity (Fuse), Overload, Short Circuit					
LED Indicators/Digital Display	OVP / UVP / OTP / OLP / VAC / AMP / WATTS / VDC / TEMP / Hz					
Remote Control Unit	Optional					
Interface Control Port	RS232C with Switch Selectable Baud Rate (2400/4800/9600/19200)					
Auto Bypass Switch	90-130VAC / 50-60Hz			180-260VAC / 50-60Hz		
Bypass Time	4-6 ms.					
Operational Temp	-30°C to +60°C (-22°F to +140°F)					
Storage Temp	-30°C to +70°C (-22°F to +158°F)					
Cooling	Temperature controlled cooling fan					
Dimensions (LxWxH)	435mm (L) x 19" (W) x 88.4mm (H) (17.12" x 19" x 3.48"), 2U					
Weight	9.8 kg. (21.60 lbs.)					



Rear Panel View

Contact Schaefer for other available products including low power inverters with built-in switch and optional battery charger.

Schaefer, Inc. - 200 Butterfield Drive - Tel: 508-881-7330 - Fax: 508-231-0861 - sales@schaeferpower.com